

■ ADDITIONAL SERVICES

- Client Support Group
- Spousal and Family Support Group
- Neuropsychological assessment to inform memory intervention and planning

■ WHO CAN REFER?

Referrals are accepted internally and from community service agencies, rehabilitation centres and hospitals. In order to expedite the referral process, referral sources are asked to include medical documents if available (e.g., neuropsychology report; brain imaging; consult reports related to the patient's neurological and cognitive status).

■ HOW MUCH DOES IT COST?

There is a one-time \$150 program fee. Family members attend at no extra cost. Private health insurance plans may cover this cost. Clients are also responsible for covering the cost of technology (e.g., smartphone or other suitable device). The program does not turn away anyone unable to pay the program fee. When relevant, consultation is provided in the selection of an appropriate device at the time of enrolment.



THE MEMORY LINK TEAM

Administrative Assistant

Ruby Nishioka

Psychologists

Brandon Vasquez, Ph.D., C.Psych.
(Supervised Practice)

Gillian Rowe, Ph.D., C.Psych.

Social Work

Ruth Brickman MSW, RSW

Trainees

Psychology and social work students

Tech Support

Consultant

Brian Richards, Ph.D., C.Psych.

Founding Contributor

Nancy Posluns, B.A.

www.baycrest.org

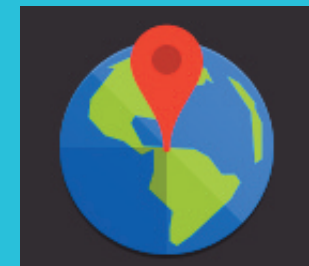
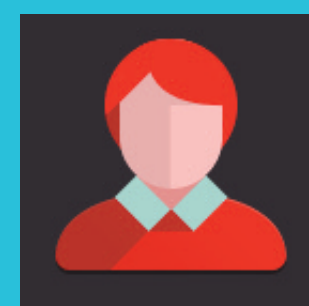
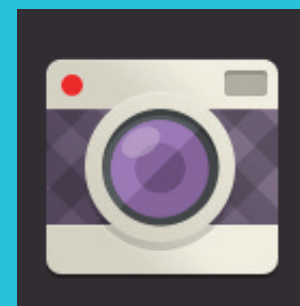
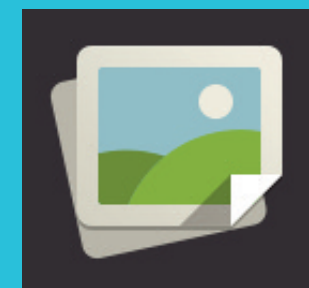
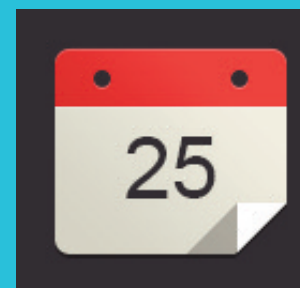


UNIVERSITY OF
TORONTO

Baycrest Health Sciences
is fully affiliated with the
University of Toronto

3560 Bathurst Street
Toronto, Ontario
Canada M6A 2E1

T. 416 785 2500 x2445
F. 416 785 4235
W. www.baycrest.org



Memory Link

A program for individuals
challenged by moderate to
severe memory impairment

Baycrest



■ WHAT IS AMNESIA?

Amnesia is the permanent disruption of memory that can accompany a neurological event or illness. The most disabling aspects of amnesia involve impairment of prospective memory (remembering to perform a task in the future) and episodic memory (remembering events and their details from the past). Fortunately the brain supports multiple types of memory such that if one type is damaged others can still support learning. Many other thinking abilities may also be preserved (e.g., intelligence, attention, problem solving, language, visuospatial skills).

■ WHAT IS MEMORY LINK?

Memory Link is a unique outpatient service established to assess, train, and support adults with memory difficulties. The objectives of the service are to:

- Link individuals with external memory aids to increase day-to-day memory functioning and independence
- Link individuals and their families to community supports
- Link emerging commercial technologies and research knowledge to practical application

■ WHY IT WORKS

Memory Link taps into preserved memory systems and thinking skills to teach individuals to use external memory aids.

■ WHO IS THE SERVICE FOR?

Memory Link is intended for adults of all ages with moderate to severe memory problems related to a neurological event or process that causes damage to memory structures of the brain including:

- Aneurysm
- Stroke
- Infection
- Hydrocephalus
- Herpes encephalitis
- Wernicke-Korsakoff's syndrome
- Non-progressive tumor
- Focal traumatic brain injury
- Multiple Sclerosis

Individuals referred should be medically stable, motivated to participate in memory intervention and able to attend an outpatient clinic.

Memory Link is not intended to address memory problems resulting from a process which progressively damages the brain such as Alzheimer's disease, Fronto-temporal lobe dementia, Lewy body disease, Parkinson's disease.

Our program resources are also not adequate for individuals with diffuse traumatic brain injury secondary to motor vehicle accidents.

■ DURATION OF PROGRAM

The program lasts about 12-16 weeks with twice weekly appointments, although this may vary from person to person

■ ABOUT US

Baycrest Health Sciences employs a wide range of healthcare professionals and research scientists who are committed to adapting emerging research knowledge into practical application.

Rotman Research Institute at Baycrest is among the top cognitive neuroscience centres in the world and home to some of the leading memory scientists, positioning us well to integrate cutting edge research into clinical practice.

Memory Link staff are involved in ongoing research in memory, memory intervention and program evaluation with the goal of improving available services for individuals with memory impairment. Many of our clients choose to be a part of this important research. Baycrest is a teaching hospital and many students in psychology and social work receive their clinical training at Memory Link.

